

Takhini River

SEWAGE LAGOONS

WHISTLE BEND

I still need to walk the area.

small bridge needed

MACPHERSON

AIRSTRIP

Macauley Creek

PORTER CREEK

CRESTVIEW

Mayo Road

Alaska Highway

Image © 2012 GeoEye

Google earth

Imagery Date: 7/30/2010

60°48'30.95" N 135°09'10.53" W elev 642 m

Eye alt 8.50 km

Many hard trail questions at Whistle Bend. Very pretty river views are the reward.

A small bridge and setting a trail will bypass a walk along the road.

Can we regain a trail along the waterfront in Marwell, or at least bypass walking along roads in the interim?

Find a trail around industrial property

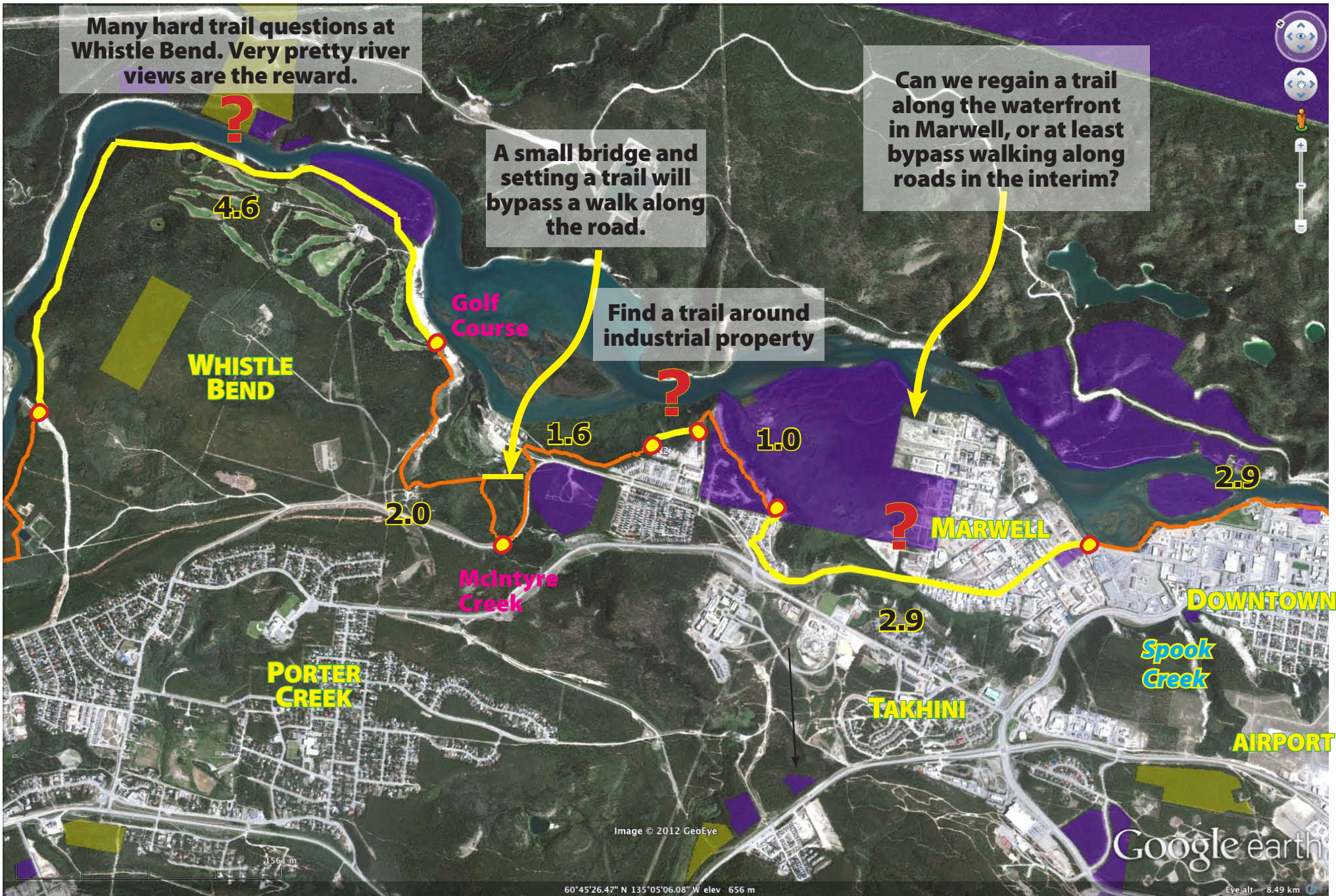


Image © 2012 GeoEye

60°45'26.47" N 135°05'06.08" W elev 656 m

Google earth

Eye alt 8.49 km

**KDFN Cultural Centre.
Possible information
centre for corridor
trail?**

Grey Mountain Road

2.9

RIVERDALE

Hidden Lakes

MARWELL

DOWNTOWN

2.2

**Millennium
Bridge**

Chadburn Lake Road

AIRPORT

5.8

**Spook
Creek**

**Miles
Canyon**

MCINTYRE

HILLCREST

Image © 2012 GeoEye

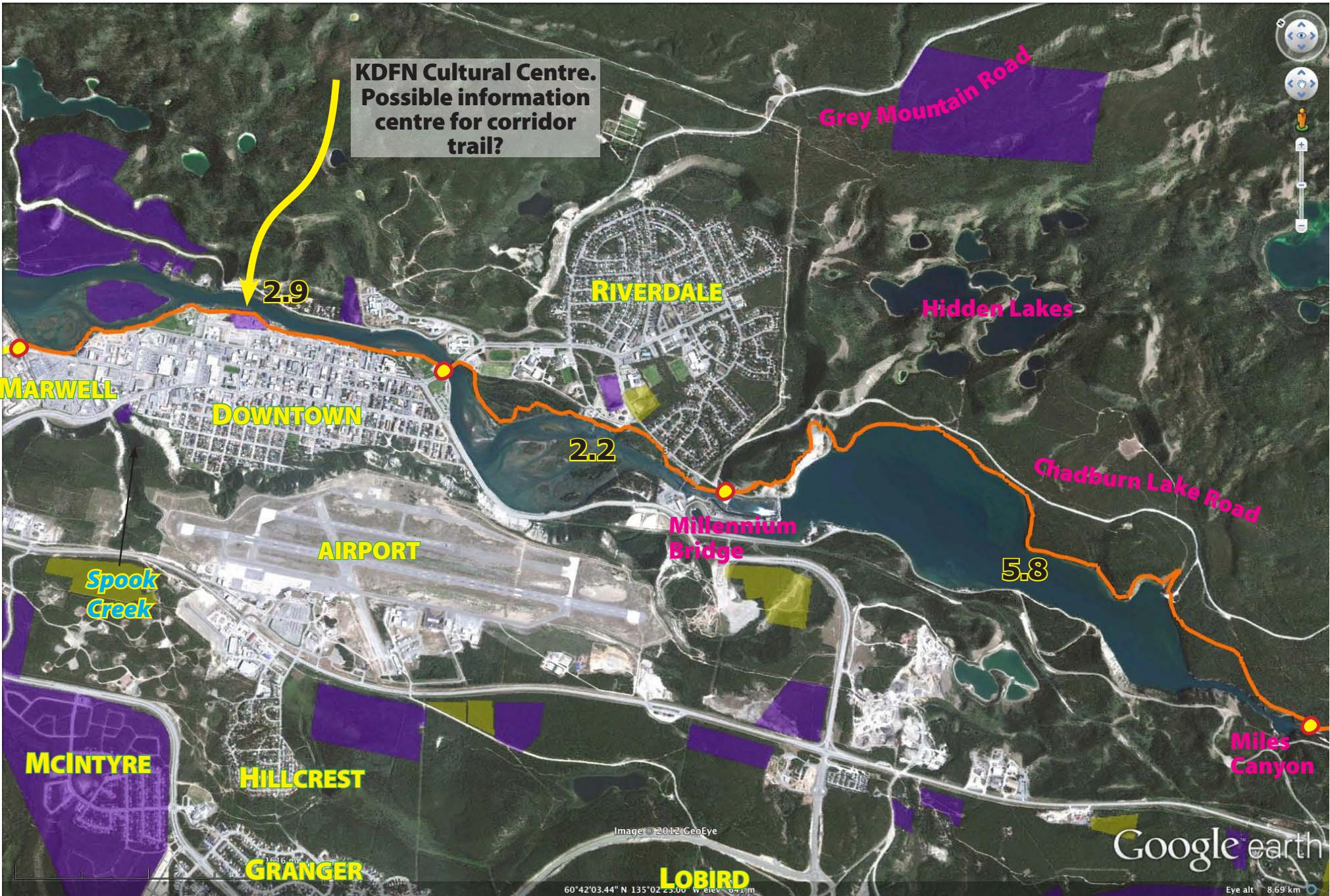
Google earth

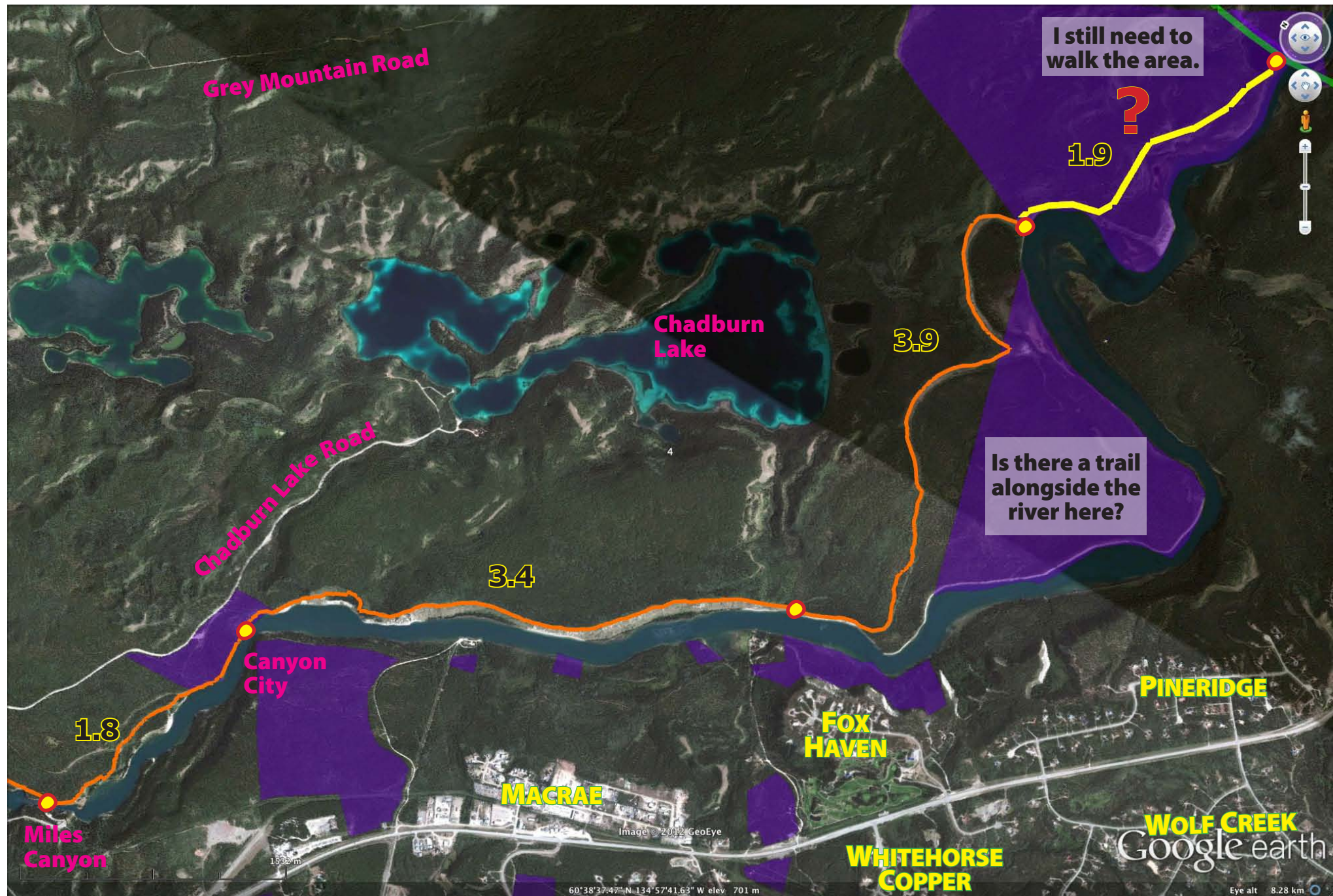
GRANGER

LOBIRD

60°42'03.44" N 135°02'23.00" W elev: 641m

Eye alt: 8.69 km





I still need to walk the area.

?

1.9

Is there a trail alongside the river here?

Grey Mountain Road

Chadburn Lake Road

Chadburn Lake

3.4

3.9

1.8

Canyon City

Miles Canyon

MACRAE

FOX HAVEN

WHITEHORSE COPPER

PINERIDGE

WOLF CREEK
Google earth

60°38'37.47" N 134°57'41.63" W elev. 701 m

Eye alt 8.28 km