

Accessing alpine in Whitehorse is often by bad roads. These two loops, starting near the high point of the maintained Fish Lake Road, offer very spectacular views, especially above treeline. The loops also access the multi-use *Starbuck's Revenge* and *Blown Away* trails built by Contagious Mountain Bike Club.

The past few years have seen the ridge as part of the Reckless Raven Ultra Marathon.

I've long been interested in Mount McIntyre's Knuckle Ridge (from our Hillcrest home it looks like the knuckles of a fist). This page is a pitch to have a community focus on this neat ridge. With a bit of work, the loops could be all season. The longer loop is highlighted in yellow, the shorter uses the green descent. They are outside city limits.

The *Up-to-the-ridge* trail is a 45 minute steady climb on a 0.9 km established trail. Views come fast! It would be nice if the upper part more easily led to both the north and south ends of the ridge.

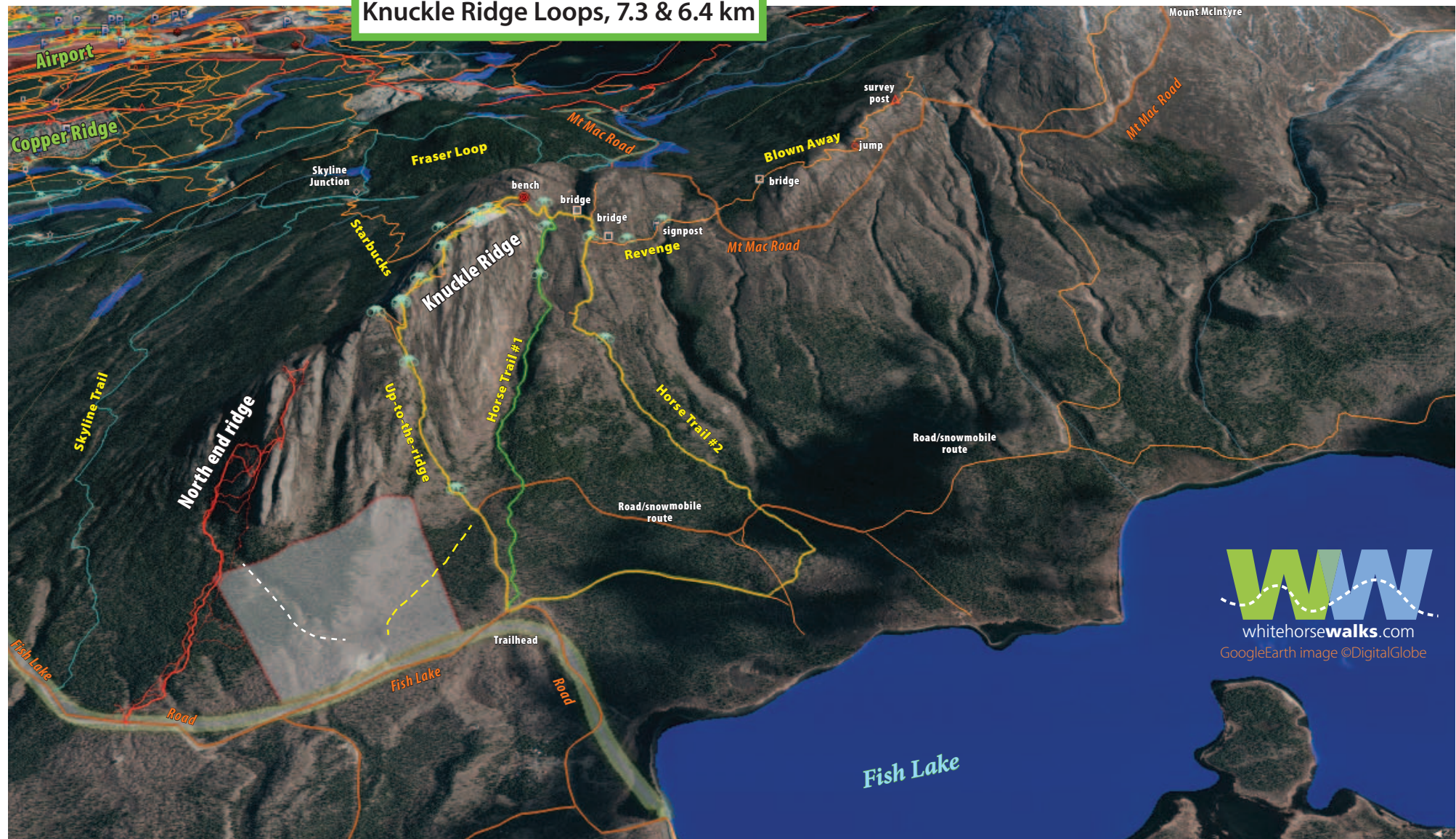
A well-marked route should be chosen to cross the ridge, minimizing disturbance, and allowing nature to have most of the ridge. It should follow the skyline of the knuckles as the hike is about views, rocks and plants — a destination, not just a route.

Small marker cairns will help in winter when snow can easily cover a path. A mix of hikers, runners, snowbikes and snowshoes could work to keeping the path followable.

Descending *Horse Trail #1* (green) through a small valley — wet in the spring, brushy but an easy slope — makes a 6.4 km loop.

The 7.3 km loop (yellow) uses *Horse Trail #2* which is pretty wet at the very top but then is great the rest of the way down.

Knuckle Ridge Loops, 7.3 & 6.4 km



WW
whitehorsewalks.com
GoogleEarth image ©DigitalGlobe

The lower section of both horse trails pass through lovely old forest with skeletal remains of large burned stumps.

The thin red lines of the North end of the ridge are hikes/snowshoes we've done. A switchback would give mountain bikers,

seniors and families fairly easy access to the upper trail network.

One proposed trailhead is at the gravel pit. From here, a trail (dashed white line) could use the glacial meltwater channel to connect over to the north end of the ridge. A trail

connection (dashed yellow line) towards the *Up-to-the-ridge* trail would mostly bypass the road/snowmobile route.

Lest someone thinks not promoting this will keep it wilder, note the two shaded white

areas. The big one is a quarry, the little one on the ridge is a wind generation possibility.

Peter, June 2020

